


premax[®]
Steel in evolution

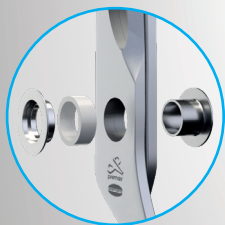
EVOLUTION

NUOVA LINEA
DI FORBICI
PROFESSIONALI

NEW LINE
PROFESSIONAL
SCISSORS



TORXSCREW



RING•LOCK[®]
SYSTEM



M A D E I N I T A L Y

MADE IN ITALY

EVOLUTION LINE

RING LOCK
SYSTEM

TORXSCREW

Forbici lavoro
Sewing scissors



RING LOCK

D63050600 - 15 cm/6"
EAN: 8012267 **87694 8**



VITE TORX
TORX SCREW

B63010600 - 15 cm/6"
EAN: 8012267 **87562 0**



Forbici lavoro
Sewing scissors



RING LOCK

D63050700 - 18 cm/7"
EAN: 8012267 **87695 5**



VITE TORX
TORX SCREW

B63010700 - 18 cm/7"
EAN: 8012267 **87563 7**



Forbici sartoria
Dressmaker's shears



RING LOCK

D63060800 - 20 cm/8"
EAN: 8012267 **87696 2**



VITE TORX
TORX SCREW

B63020800 - 20 cm/8"
EAN: 8012267 **87564 4**



Forbici sartoria
Dressmaker's shears



RING LOCK

D63060900 - 23 cm/9"
EAN: 8012267 **87697 9**



VITE TORX
TORX SCREW

B63020900 - 23 cm/9"
EAN: 8012267 **87565 1**



M A D E I N I T A L Y

MADE IN ITALY

EVOLUTION LINE

SCHEDA TECNICA | TECHNICAL SHEET

TORXSCREW

CODICE ARTICOLO ITEM CODE	B63010600	B63010700	B63020800	B63020900
MATERIALE MATERIAL	AISI 420 acciaio inox stainless steel	AISI 420 acciaio inox stainless steel	AISI 420 acciaio inox stainless steel	AISI 420 acciaio inox stainless steel
DIMENSIONI SIZE	6" - cm. 15	7" - cm. 18	8" - cm. 20	9" - cm. 23
VITE SCREW	VITE TORX con dado TORX SCREW with nut	VITE TORX con dado TORX SCREW with nut	VITE TORX con dado TORX SCREW with nut	VITE TORX con dado TORX SCREW with nut
LAMA * BLADE	Lama Retta Filo coltello Straight blade Knife edge	Lama Retta Filo coltello Straight blade Knife edge	Lama Retta Filo coltello Straight blade Knife edge	Lama Retta Filo coltello Straight blade Knife edge
DUREZZA LAME BLADE HARDNESS	52 HRC	52 HRC	52 HRC	52 HRC
SPESSORE LAME BLADE THICKNESS	2,8 mm.	2,8 mm.	3,8 mm.	3,8 mm.
MANICO HANDLE	Nylon gomma Megol - Soft-touch Nero sabbata Megol Nylon rubber - Soft-touch Black sandblasted	Nylon gomma Megol - Soft-touch Nero sabbata Megol Nylon rubber - Soft-touch Black sandblasted	Nylon gomma Megol - Soft-touch Nero sabbata Megol Nylon rubber - Soft-touch Black sandblasted	Nylon gomma Megol - Soft-touch Nero sabbata Megol Nylon rubber - Soft-touch Black sandblasted

RING-LOCK
SYSTEM

CODICE ARTICOLO ITEM CODE	D63050600	D63050700	D63060800	D63060900
MATERIALE MATERIAL	AISI 420 acciaio inox stainless steel	AISI 420 acciaio inox stainless steel	AISI 420 acciaio inox stainless steel	AISI 420 acciaio inox stainless steel
DIMENSIONI SIZE	6" - cm. 15	7" - cm. 18	8" - cm. 20	9" - cm. 23
VITE SCREW	RING LOCK	RING LOCK	RING LOCK	RING LOCK
LAMA * BLADE	Lama Retta Filo coltello Straight blade Knife edge	Lama Retta Filo coltello Straight blade Knife edge	Lama Retta Filo coltello Straight blade Knife edge	Lama Retta Filo coltello Straight blade Knife edge
DUREZZA LAME BLADE HARDNESS	52 HRC	52 HRC	52 HRC	52 HRC
SPESSORE LAME BLADE THICKNESS	2,8 mm.	2,8 mm.	3,8 mm.	3,8 mm.
MANICO HANDLE	Nylon gomma Megol - Soft-touch Nero sabbata Megol Nylon rubber - Soft-touch Black sandblasted	Nylon gomma Megol - Soft-touch Nero sabbata Megol Nylon rubber - Soft-touch Black sandblasted	Nylon gomma Megol - Soft-touch Nero sabbata Megol Nylon rubber - Soft-touch Black sandblasted	Nylon gomma Megol - Soft-touch Nero sabbata Megol Nylon rubber - Soft-touch Black sandblasted

* Tutte le forbici sono disponibili anche con lame filo microdentato
All scissors are also available with micro serrated edge

RING-LOCK
SYSTEM

TORXSCREW

CONSORZIO PREMAX

23834 PREMANA (LC) | Via Giabbio

Tel. +39 0341 890.377 | + 039 0341 818.003 | Fax +039 0341 890.386

www.premax.it | www.ringlock.it | www.premaxshop.com

premax@premax.it

